



# Irancy



## APPELLATION D'ORIGINE CONTRÔLÉE

**Appellation Village** of the *Auxerrois* wine-growing region (Yonne).

On the label, the name of the *Climat* from which the wine comes may appear immediately beneath the word IRANCY in letters no larger than half the size.

Producing communes: **Irancy, Cravant, Vincelottes.**

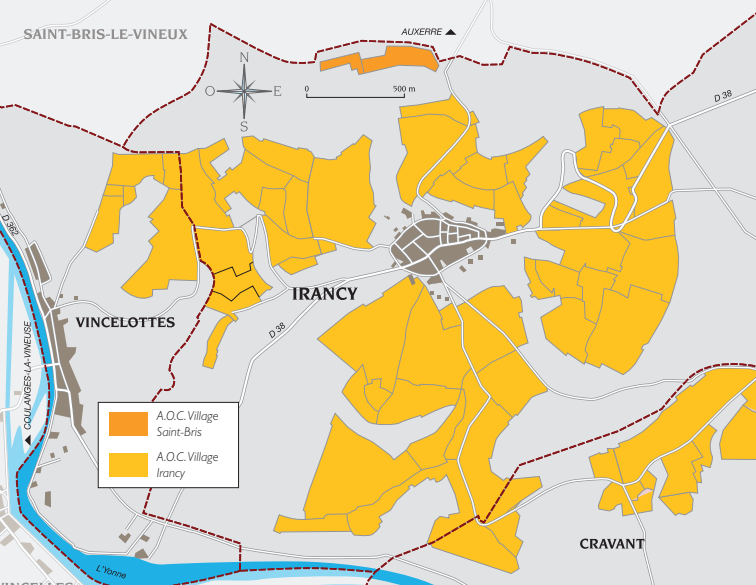
## TASTING NOTES

This is a **red** wine made from *Pinot Noir* grapes. An unusual feature is that it may, if desired, include in its composition up to 10% of *César*, a traditional grape of this region. Rich in tannins, lively in colour, the *César* is a noble grape which lends the wine an interesting personality. Minor differences are observable according to whether a given *cuvée* is made with *Pinot Noir* only or includes an element of *César*. The strong crimson colour of this wine, shading towards dark red, is rich in highlights. The bouquet is bursting with fruit aromas (blackcurrant, Morello cherry, raspberry, blackberry) with sometimes floral, liquorices or pepper notes. On the palate, the tannins melt into a firm and velvety structure. Its acidity is sufficient to ensure excellent keeping qualities (3-10 years).

## SERVING SUGGESTIONS

**Red:** solid yet charming, Irancy cries out for dishes with strong, meaty flavors. Spare ribs and other barbecued meats will find it an enthusiastic partner because it combines virile tannins with real aromatic power. Casseroles, of poultry for example, are another worthy match. And it goes without saying that cold cuts and *pâtés*, faggots and terrines find in Irancy a boon companion, its tannins balance the unctuousness of dishes like these. The cheese board could include Camembert, Coulommiers, Brie de Meaux, Cantal, Chaource, Langres, Epoisses, Soumaintrain...

**Serving temperature:** 15 to 18 °C.



## LOCATION

Irancy, in the *Grand Auxerrois* region, stands on the right bank of the Yonne river, some fifteen kilometres South of Auxerre and South-West of Chablis. It is typical of the wine-growing villages of the district. It boasts a majestic church, as well as the house where G. Soufflot, architect of the Paris Panthéon, was born. The handsome winemaker's houses make a fitting setting for a red wine with such a long-established reputation. It was raised to the status of an *appellation Village*, which it shares with the neighboring villages of Cravant and Vincelottes, in 1999.

## SOILS

The hill-slopes hereabouts form a bowl surrounding the beginnings of a plateau below which runs the river Yonne. The slopes are for the most part composed of Kimmeridgian marls with an admixture of brown limestone soils and here the *Pinot Noir* grape flourishes at altitudes of 130-250 metres. Exposures vary, mostly southerly or South-westerly. Some *terroirs* have long been recognised as being of unusual merit.

## COLOUR(S) AND GRAPE VARIETY(IES)

**Reds only - *Pinot Noir* and *César*.**

The ***César*** grape, of which there are some 5 hectares in the Irancy *appellation*, is said to have been brought here by the Roman legions. It is a vigorous variety which produces largish bunches of spherical blackberries. On its own (unblended) it yields a highly colored wine with red-fruit aromas and rich tannins.

## PRODUCTION

### Area under production\*:

1 hectare (ha) = 10,000 m<sup>2</sup> = 24 *ouvrées*.

**206.86 ha**

### Average annual yield\*\*:

1 hectolitre (hl) = 100 litres = 133 bottles.

**6,765 hl**

\*In 2022 \*\*5-year average, 2017-2021